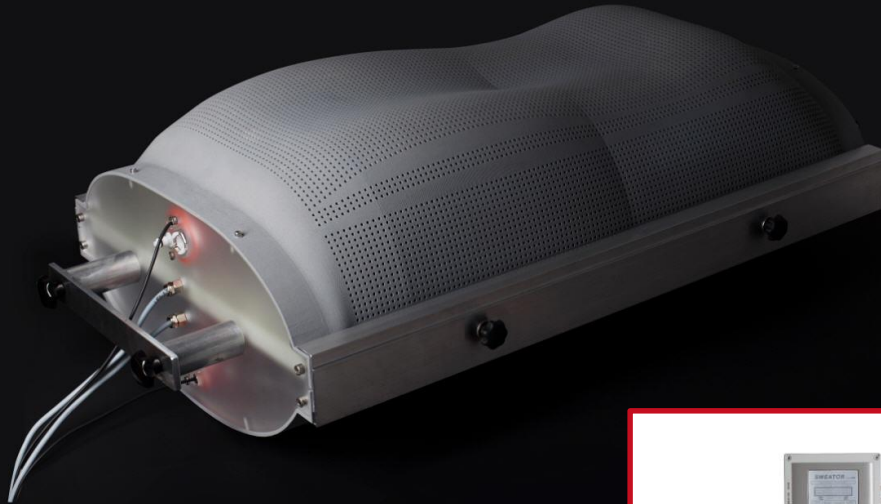


SWEATOR *INSIDE HUMIDITY*



SWEATOR TORSO

SWEATOR technology simulates human thermoregulation behavior by emitting controlled heat and humidity into ready-made product environments.

SWEATOR-TORSO has been designed to simulate these processes within ready-made sleep and laying systems and apparel.

Product features:

- Easy handling
- Reproducible data output
- 2D and 3D contours of upper body
- Controlled heat and water vapor emission
- No direct wet spots – water vapor only
- Integrated heat and pump unit for even heat supply
- Control unit with touch screen
- Diverse sweat rates
- Various warm up and test modes
- Proven technology

Fields of application:

- Climate simulation within ready-made sleep systems, mattresses, duvets (comforters), laying areas of all kind.
- Professional concept to build up reproducible climate data
- Comparison of the climate behavior of different products
- Development of climate comfort attributes
- Optimization of Quality Management
- Calculation of major thermo-dynamic key figures

All SWEATOR products:

- Torso (bedding)
- Torso (apparel)
- Skin (textile patterns)
- Head (head protection)
- Foot (footwear)
- Other shapes upon request

We will be pleased to talk to you:





General technical data:

Control:	Stand alone touch screen panel for data input and storage with wall holders.
Power supply:	110 - 240 V, 300 W (global standards available)
Humidity emission:	Only water vapor, no wet-spots.
Heating:	Infinitely controllable from 10 – 100 Watt
Temperature control:	Controller with PT 1000
Size:	Torso appr 70 x 45 x 25 cm, sweat areas appr 60 x 40 cm (appr 0,26 m ² per side)
Sweat simulation:	Permeable membrane technology, water bladder, heated
Filling:	Back max. appr 5 - 6 l, front max appr 4 l distilled water
Permeability:	Appr from 90 g/m ² h – 120 g/m ² h with standard shells at 21°C/50 % RH room climate and 37° C/100 % RH SWEATOR core conditions.
Shape:	3D-contour back equals male of EU 95. percentile, front 2D-contour.
Data conducted:	Heat/Pump demand front and back, temperature in the core, time, T/RH of environment, weight (with a scale connected to SCU unit – not included in the scope of delivery).
Length of cables:	On demand
Additional weights:	max. 4 x 2,5 kg per side (not included in scope of delivery)
FI protection switch:	yes
CE conformity:	yes