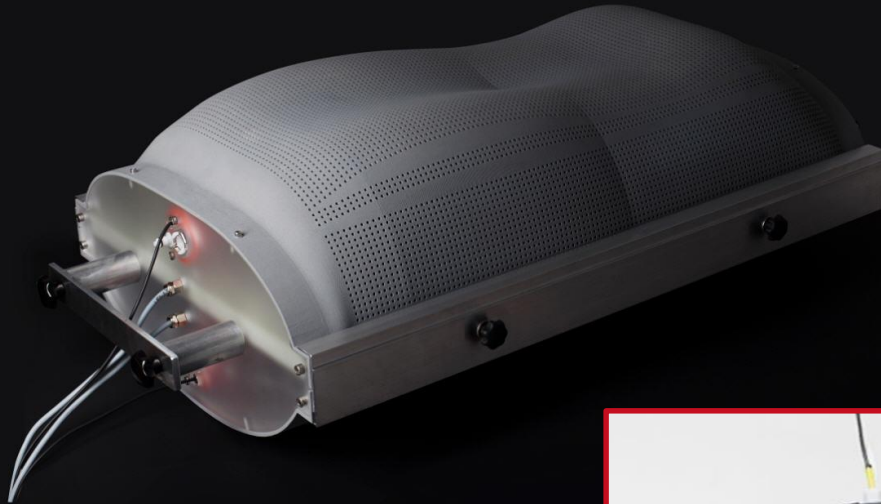


SWEATOR INSIDE HUMIDITY



SWEATOR FOOT

SWEATOR technology simulates human thermoregulation behavior by emitting controlled heat and humidity into ready-made product environments as well as textile samples and compounds.

SWEATOR-FOOT has been designed to simulate these processes within foot wear of all kinds.

Product features:

- Easy handling
- Reproducible data output
- Controlled heat and water vapor emission
- No direct wet spots – water vapor only
- Integrated heat and pump unit for even heat supply
- Foot shape with EU 42 size
- Control unit with touch screen
- Various warm up and test modes
- Several sweat rates
- Proven technology

Fields of application:

- Climate simulation in head protection devices
- Professional concept to build up reproducible climate data
- Comparison of the climate behavior of different products
- Development of climate comfort attributes
- Optimization of Quality Management
- Calculation of major thermo-dynamic key figures

All SWEATOR products:

- Torso (bedding – image above)
- Torso (apparel)
- Skin (textile patterns)
- Head (head protection)
- Foot (footwear)
- Other shapes upon request

We will be pleased to talk to you:





SCU2 control unit

General technical data:

Control:	Stand alone touch screen panel for data input and storage with wall holders.
Power supply:	110 - 220 V, 300 W (global standards available)
Humidity emission:	Only water vapor, no wet-spots.
Heating:	Infinitely controllable from 10 – 100 Watt
Temperature control:	Controller with PT 1000
Size:	Foot appr 35 x 30 x 10 cm with console
Sweat simulation:	Permeable membrane technology, water bladder, heated
Filling:	Up 2 l of distilled water
Permeability:	Appr from 90 g/m ² h – 120 g/m ² h with standard shells at 21°C/50 % RH room climate and 37° C/100 % RH SWEATOR core conditions.
Shape:	Foot form, hollow, with EU size 42
Data conducted:	Heat/Pump demand, temperature in the core, time, T/RH of environment, weight (with a scale connected to SCU unit – not included in the scope of delivery).
Length of cables:	On demand
FI protection switch:	yes
CE conformity:	yes
Add-on devices:	Scale can be connected to SCU2